

A Great Cow Leaves a Legacy . . .



SAF ROYAL QUEEN 5084

SW	+28.48
SF	+24.17
SG	+9.65
SB	+30.47
Carcass	Ultrasound
MARB	%IMF
+1.13	+1.13
REA	RE
-1.01	+0.02
%RP	%RP
-1.07	-.45

CED	BW	WW	YW	SC	CEM	MILK
+12.56	-1.0 .61	+45 .60	+83 .57	+1.46 .57	+12 .41	+27 .50



SAF DIRECTIVE



SAF CONNECTION



SAF STRATEGY 9015



SAF FOCUS 9095



SYDGEN ECLIPSE 2478

Acclaimed as the curve-bender dam of the Angus breed, SAF Royal Queen 5084 spreads the numbers, adds scrotal and fertility, and creates "the look." As she enters her twilight years, our 2005 sale offering will carry more of her influence than ever before. Direct progeny will sell by SydGen Sterling 0298, Summitcrest High Prime 0H29, BCC Bushwacker 41-93, and KCF Bennett Coalition SCC. The first progeny of her sons SydGen Eclipse 2478, SydGen Bouncer 2458, Big Elban of SydGen 3023, and Big Elban of SydGen 3067 will be highlighted, as well as the progeny of her proven, high-accuracy sons.



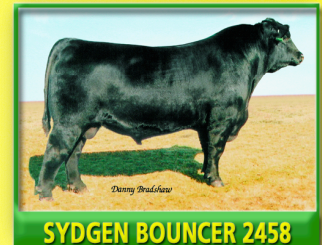
BIG ELBAN OF SYDGEN 3023



SAF FOCUS J30



SAF TOP DOLLAR



SYDGEN BOUNCER 2458

Plan to be with us this fall:
September 29 • National Angus Tour Stop
November 19 • 27th Annual Production Sale

Semen and A.I. certificates always available.
Call (573) 581-1225

Registered Angus Cattle Since 1952
Sydenstricker Genetics

Eddie Sydenstricker
(573) 581-5555
Fax (573) 581-5991
www.sydgen.com

Sydenstricker John Deere
Office (573) 581-5900
Helen Vorhis, Secretary

P.O. Box 280
Mexico, MO 65265
Fax (573) 581-1224
Suzy Harrison, Farm Secretary

Farm Office (573) 581-1225
Ben Eggers, Mgr. (573) 581-7069
E-mail: eggers@socket.net
Brent Schuering

Sammy Breid
Dave Pickrell
Matt Gruber
Ed Creason