

Curve-bending \$W Leaders with Style . . .



SAF Directive

SW	+37.32
\$B	+43.82
Carcass	Ultrasound
MARB	%IMF
+05	+17
REA	RE
+34	+23

CED	BW	WW	YW	SC	CEM	MILK
+8	+1.8	+56	+103	+1.26	+2	+29

Owned with Big Dry Angus Ranch, Jordan, MT. Directive's high accuracy curve-bending genetics along with added length of body have made him one of our most popular sires for several years. HP EPD in the top 10%, and excellent reports on timed AI conception. \$16 per unit.



Connealy Forward

SW	+30.01
\$B	+55.04
Carcass	Ultrasound
MARB	%IMF
N/A	+13
REA	RE
N/A	+89

CED	BW	WW	YW	SC	CEM	MILK
+9	+1.8	+65	+122	+36	+11	+24

Owned with Three Trees Ranch, Sharpsburg, GA and 7L Farms, Wiggins, MS. As the top-selling bull of the top Angus bull sale in the spring of 2007, Forward has been one of the most sought-after young sires in the industry, and his first calves are drawing considerable attention. \$40 per unit.



SydGen Turbo 6684

SW	+31.10
\$B	+52.02
Carcass	Ultrasound
MARB	%IMF
+13	+37
REA	RE
+32	+34

CED	BW	WW	YW	SC	CEM	MILK
+10	+6	+54	+105	+54	+7	+28

Owned with R&K Angus, Armstrong, MO. The top-selling bull of our 2007 Sale at \$30,000 after posting an adj. 365-day weight of 1,544. Turbo will be used extensively in our program. \$20 per unit.

Owned with TK Angus, Gordon, NE. Bullet topped the bull calf division of our 2005 offering at \$30,000, and his first calf crop of 55 sons at TK Ranch beat the average bull price by \$549 per head. \$20 per unit.



SydGen Bullet

SW	+34.06
\$B	+46.82
Carcass	Ultrasound
MARB	%IMF
+09	+17
REA	RE
+13	+38

CED	BW	WW	YW	SC	CEM	MILK
+3	+1.1	+65	+115	+68	+9	+21



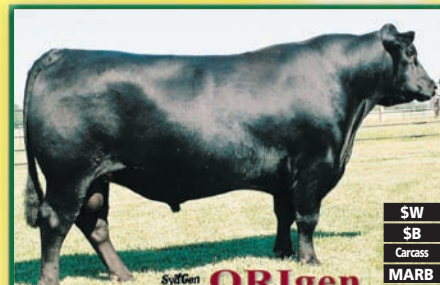
Three Trees Next Step

SW	+35.50
\$B	+58.21
Carcass	Ultrasound
MARB	%IMF
+40	+45
REA	RE
+39	+82

CED	BW	WW	YW	SC	CEM	MILK
+3	+2.7	+64	+99	+34	+6	+26

Owned with the Next Step Syndicate, Sharpsburg, GA. We've been impressed with the muscle and maternal capabilities of this young sire who is one of the top combinations of \$W and \$B in the breed. \$30 per unit.

Owned with the Whispering Wind Syndicate, Olivet, SD. This outcross sire really spreads the numbers from birth to weaning, and posts a proven IMF EPD in the top 1% of proven sires. \$16 per unit.



Mogck Whispering Wind

SW	+35.57
\$B	+45.45
Carcass	Ultrasound
MARB	%IMF
+16	+51
REA	RE
+00	-21

CED	BW	WW	YW	SC	CEM	MILK
+4	+1.5	+56	+88	+87	+3	+28

More information on all these sires is included in the 2008 ORigen Sire Directory, available by calling 1-866-867-4436, and at www.ORigenbeef.org. Semen is available from ORigen and many local semen distributors. Some sires are also available through your local ABS representative.

Semen and additional information is available direct from SydGen at 573-581-1225 and www.sydgen.com. Volume discounts available on many sires, and free shipping is available on orders totaling \$500 or more. All AI certs are priced at \$40.

Registered
Angus Cattle
Since 1952

Eddie Sydenstricker
(573) 581-5555
Fax (573) 581-5991
www.sydgen.com

Sydenstricker John Deere
Office (573) 581-5900
Helen Vorhis, Secretary

P.O. Box 280
Mexico, MO 65265
Fax (573) 581-1224

Farm Office (573) 581-1225
Ben Eggers, Mgr. (573) 581-7069
Suzy Harrison, Farm Secretary
E-mail: eggers@socket.net

Bub Raithe
Sammy Gruber
Matt Gruber
Kyle Vukadin
Aaron Ismael

Sydenstricker Genetics