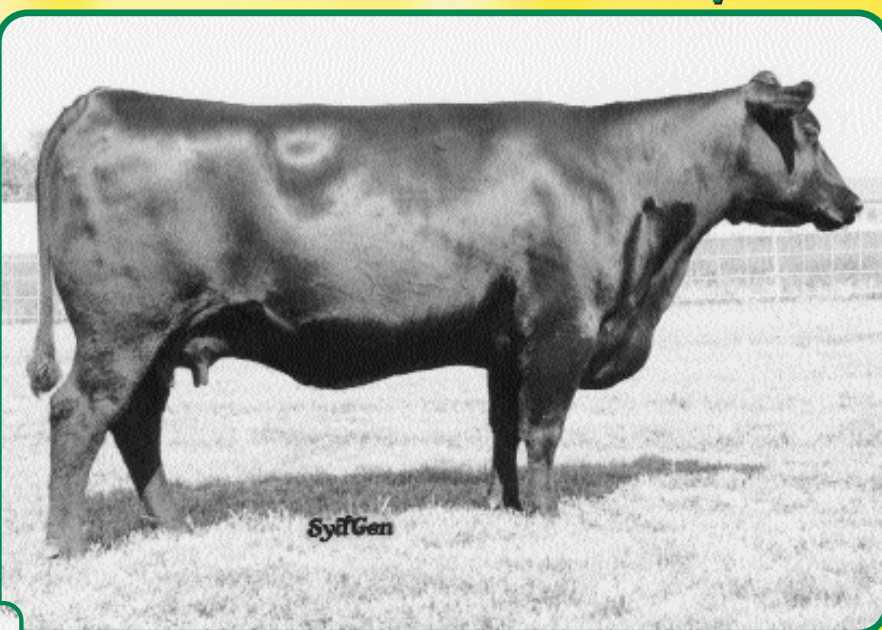


Celebrating 50 Years of Angus Progress

24th Annual Production Sale • November 23, 2002

Our sixty-head mature cow offering will be anchored by this 315 daughter out of GAR Scotch Cap 309, the grandam of the Belle Point herd sire GAR Commitment. SAF Rita 5234 is a maternal sister to the Gallagher and Shady Brook donor GAR EXT 614, the dam of the \$100,000 half-interest donor sold by Baldrige Brothers to Southern Cattle Company, the \$100,000 donor sold by Gardiner to Sunny Valley and Oak Tree, and the \$72,500 half-interest donor sold by Eaglestone to Kahn Cattle Co.

Coming to us as the highlight of a \$30,000 flush from Circle A Ranch, SAF Rita 5234 produced the top-selling fall yearling bull in our 2000 Sale, SAF MOGCKS SECURITY, at \$14,000 to Mogck & Sons, Olivet, SD. Four sons by DIVERSITY and FOCUS will be some of the very top herd bull prospects in this year's bull divisions, and a FOCUS daughter will be offered, as well. This powerful donor sells bred to SAF MILLCREEK CHARISMA, and will be fresh and ready to flush in your donor program next spring.



SAF Rita 5234 • Calved August 26, 1995

BIRTH	WEAN	MILK	YEARLING	SC	CARC	MARB	REA	FAT	%RP
+3.5	.72	+43	.67	+24	.67	+77	.69	+06	.39
+10	.31	+1	.26	.31	+15	.31	+1	.21	.31
+1	.22	.31							
Ultrasound Body Composition EPD									
%IMF	RE	FAT	%RP						
+0.03	.09	+0.12	.09	+0.013	.09	+0.03	.09		

SELLING 420 HEAD!

Our congratulations to Circle A Ranches, Iberia, MO, on being named the 2002 Beef Improvement Federation Seedstock Producer of the

Year. We believe back-to-back wins for Missouri Angus breeders of this prestigious award shows the innovation and strength of the seedstock and Angus industry in the Show-Me State.

Missouri ranks first in the country for number of seedstock produced and second in the nation for beef cow numbers.

- 175 Herd Sire Prospects
- 140 Breeding Age Females
- 60 Heifer Calves



SydGen Royal Lass 1323 • Calved September 15, 2001

A feature of our forty fall yearling heifers will be this daughter of Rockn D Ambush 1531. Her Durabull-sired dam is a maternal sister to SAF 598 BANDO 5175, SAF CASH, SAF 30-06, and SAF CHARMER.

BIRTH	WEAN	MILK	YEARLING	SC	CARC	MARB	REA	FAT	%RP
+3.8	.38	+41	.38	+21	.32	+74	.27	+1	.24
+8	.26	+1	.32	.26	+1	.35	.26	+1	.019
+1	.25	+1	.48	.25					
Ultrasound Body Composition EPD									
%IMF	RE	FAT	%RP						
+1	.14	.07	+1	.09	.07	+1	.020	.07	+1
									.36

Always available from Sydenstricker's	Semen	Cert.
SAF FOCUS OF ER	\$70	\$40
SAF 598 BANDO 5175	\$25	\$40
MILLCREEK DIVERSITY	\$20	\$40
SAF MOGCKS SECURITY	\$16	\$40
VDAR NEW TREND 315	\$15	\$40

5th Annual Sydenstricker Influence Sale
250 bred heifers bred to or sired by SydGen Sires
November 23 • 7 p.m.

The fastest way to get there is to buy the right genetics.

Registered Angus Cattle since 1952

Sydenstricker Genetics

Eddie Sydenstricker
(573) 581-5555
Fax (573) 581-5991

Sydenstricker John Deere
Office (573) 581-5900
Helen Vorhis, Secretary

P.O. Box 280
Mexico, MO 65265
Fax (573) 581-1224
Stacy Loyd, Farm Secretary

Farm Office (573) 581-1225
Ben Eggers, Mgr. (573) 581-7069
E-mail: eggers@socket.net
www.sydgen.com

Visitors
Always
Welcome
Brent Schuering
Sammy Breid
Josh Lewis
Dave Pickerell