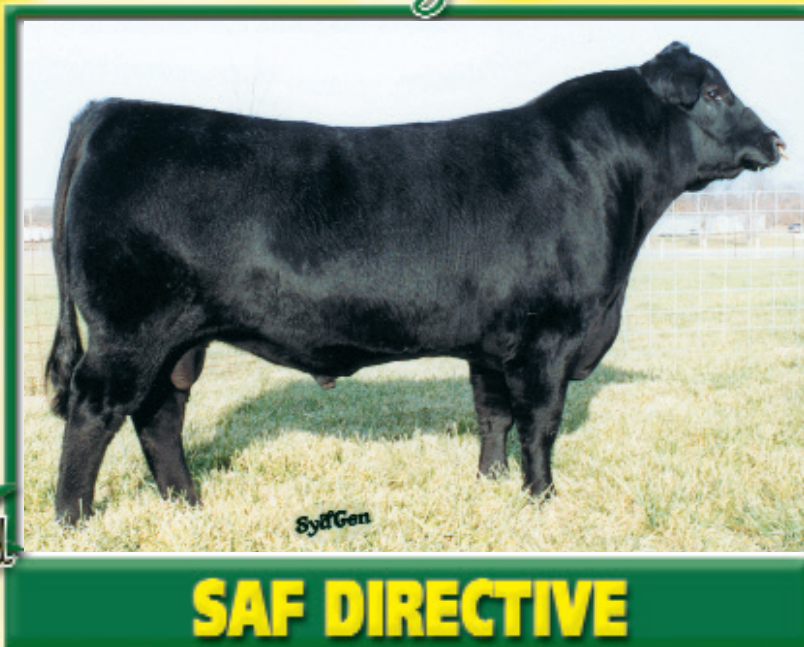


Our Best Genetics, Available to you . . .

As the highest WW EPD sire in the young sire summary that is under +1 on BW and in the top 10% for IMF and Scrotal EPDs, **DIRECTIVE** is a logical choice for your A.I. program. His multi-trait superiority has already brought nationwide attention, and his first daughters in production will further expand his popularity.

As the natural son of SAF Royal Queen 5084, **DIRECTIVE** is a maternal brother to Strategy, Bulls Eye, Focus 903, Connection, Top Dollar, Focus J30, Focus 9095, Big Elban 3023, Eclipse and Bouncer.



SAF DIRECTIVE

Owned with Big Dry Angus Ranch, Jordan, MT

BIRTH	WEAN	MILK	YEARLING	SC	SF
+4 .85	+55 .85	+28 .61	+88 .78	+88 .72	+24.97
CARC		MARB	REA	FAT	SB
+16 .25	+1.16 .26	+1.12 .25	+1.015 .25	+1.23 .25	+13.85
Ultrasound Body Composition EPD					
%IMF	RE	FAT	%RP	SB	
+20 .54	+21 .54	+0.017 .54	-1.18 .54	+36.64	

Sons sell
at Midland



SAF MADEMOISELLE 6180

BIRTH	WEAN	MILK	YEARLING	SC	SF
+4.4 .73	+35 .66	+28 .80	+65 .62	+0.00 .05	+10.90
CARC		MARB	REA	FAT	%RP
+1.2 .29	+1.12 .29	+1.18 .29	+1.020 .29	+1.42 .29	+14.03
Ultrasound Body Composition EPD					
%IMF	RE	FAT	%RP	SB	
-0.08 .16	+46 .16	-0.014 .17	+58 .16	+24.29	

The popular \$14,000 second top-selling bred cow in our 2003 sale to Camp Cooley Ranch, Franklin, TX, this powerful daughter of PAPA Forte is the donor dam of our three **DIRECTIVE** sons selling at Midland Bull Test on April 9, 2004.



SYDGEN ECLIPSE 2478

Owned with Van Nice Angus Ranch, Silver Star, MT

BIRTH	WEAN	MILK	YEARLING	SC	SF
+1.1 .39	+44 .36	+25 .45	+81 .36	+1.29 .31	+22.39
CARC		MARB	REA	FAT	%RP
+14 .27	+1.12 .28	+1.24 .27	+1.000 .27	+1.08 .27	+18.05
Ultrasound Body Composition EPD					
%IMF	RE	FAT	%RP	SB	
+21 .36	+34 .36	+0.001 .37	+22 .36	+38.01	



SYDGEN BOUNCER 2458

Owned with Wiederstein Pure Angus Farm, Audubon, IA

BIRTH	WEAN	MILK	YEARLING	SC	SF
+1.6 .39	+39 .36	+25 .45	+82 .36	+1.29 .31	+25.16
CARC		MARB	REA	FAT	%RP
+14 .27	+1.12 .28	+1.24 .27	+1.000 .27	+1.08 .27	+15.81
Ultrasound Body Composition EPD					
%IMF	RE	FAT	%RP	SB	
+21 .36	+38 .36	+0.023 .37	+0.4 .36	+36.36	

The \$30,000 and \$28,000 top-selling and second top-selling bulls from our 2003 sale, these sons of E161 out of SAF Royal Queen 5084 offer tremendous potential for multi-trait superiority. The strength of this flush along with the breed-leading EPD profiles of E161 and 5084 make them some of the most intriguing young sires on the horizon.

Always Available from SydGen

SAF Directive	\$20
SydGen Eclipse 2478	\$20
SydGen Bouncer 2458	\$16
Big Elban of SydGen 3023	\$16
SAF Focus of ER	\$50
SAF Fame	\$12
VDAR New Trend 315	\$15
SydGen Refocus	\$20
SAF Choice Plus	\$15
SydGen Prestige 1316	\$20
Millcreek Diversity	\$20
SAF Focus J30	\$14
SAF Focus 9095	\$14
SAF Connection	\$16
Circle A Fame 9493	\$16
Leachman Boom Time	\$20
Spur Success 2801	\$20
SydGen Sterling 0298	\$20

All A.I. certs \$40
Other ORigen sires also available
Volume discounts on many sires and free shipping on orders more than \$500.

Registered
Angus Cattle
Since 1952

Sydenstricker Genetics

Eddie Sydenstricker
(573) 581-5555
Fax (573) 581-5991
www.sydgen.com

Sydenstricker John Deere
Office (573) 581-5900
Helen Vorhis, Secretary

P.O. Box 280
Mexico, MO 65265
Fax (573) 581-1224
Stacy Loyd, Farm Secretary

Farm Office (573) 581-1225
Ben Eggers, Mgr. (573) 581-7069
E-mail: eggers@socket.net
Brent Schuering

Sammy Breid
Josh Lewis
Dave Pickerell
Matt Gruber